

Ulster County Resource Recovery Agency Kingston, NY

Timothy B. Rose, P.E., BCEE, QEP, M.P.A.
Executive Director



SUNY New Paltz
November 16, 2011

What is the UCRRA?

- In the mid-1980's, after new initiatives to close non-complying existing landfills were undertaken by the NYSDEC and strict requirements for the siting, construction, and operation of new disposal facilities were enacted, many communities found it beyond their financial and managerial capability to continue to dispose of waste in traditional ways.
- Agency created in 1986. Public Benefit Corporation of the State of New York which is empowered by Chapter 13-G of the Public Authorities Law to manage solid waste and recyclables in the County of Ulster.

What is the UCRRA? (cont.)

- Mission:
 - To provide an efficient, economical and environmentally sound solid waste management system in and for the County of Ulster.
- Consists of two transfer stations (Ulster and New Paltz), two scale houses, a vehicle maintenance facility, a material recovery facility (MRF), offices, and three closed landfills (Lloyd, New Paltz, and Ulster).

Local Solid Waste Management Plan

- Per NYSDEC, “The Department believes that comprehensive planning is a key element of successful materials management programs. It is critical that Local Planning Units continually evaluate and improve their solid waste management strategies since they serve as guardians of public health, safety and the environment. An estimated 37 million tons of municipal solid waste are managed each year in New York State. As it decomposes in a landfill or is combusted in a waste to energy facility, MSW generates approximately 2.17 percent of total GHG emissions statewide. Recycling and solid waste management best practices are essential to reducing GHG emissions and combating climate change.”

Local Solid Waste Management Plan (cont.)

- Original Local Solid Waste Management Plan is a 20-year plan and was approved by the NYSDEC in December 1991.
- Therefore current plan expires in December 2011.
- Draft of amendment currently resides with the NYSDEC.
- DEC reviews the draft LSWMP to determine whether it effectively addresses all matters required by 6 NYCRR 360-15.9

Local Solid Waste Management Plan (cont.)

- Once DEC determines that the draft LSWMP is a substantive consideration of the elements in 6 NYCRR Section 360-15.10, DEC provides notice to the Local Planning Unit of its intent to approve the LSWMP. This notice is colloquially known as the "approvable letter".
- DEC recommends that the Local Planning Unit conduct the Public Comment period after receipt of the "Approvable Letter" from DEC.

Flow Control Law

- Flow control law currently exists however if enforced would not hold up in court.
- Carbone decision.
- Proposed amendment to current law currently “tabled” by the Agency Board.
- Agency Board vote is only an endorsement.
- County Legislature has power to enact law.
- County Legislature has not voted on it yet.

Volume of Waste Processed in 2010

- Ulster Transfer Station
 - C&D = 15,507 tons
 - MSW = 100,471 tons
 - Sent to Seneca Meadow Landfill = 69,015 tons
 - Sent to High Acres Landfill = 46,168 Tons
- Difference in what was received and what was sent is due to diverted waste (i.e. metal, brush, concrete, tires, etc.)

Volume of Waste Processed in 2010 (cont.)

- New Paltz Transfer Station
 - C&D = 3,463 tons
 - MSW = 31,875 tons
 - Sent to Seneca Meadows Landfill = 33,849 tons
 - Sent to High Acres Landfill = 1,514 tons
 - Sludge = 2,414 tons
 - Sent to Niagara Falls Landfill

Volume of Recyclables Received in 2010

- Material Recovery Facility
 - Single Stream = 2,524 tons
 - Corrugated Cardboard = 4,039 tons
 - Newspaper = 4,971 tons
 - Container Glass = 2,566 tons
 - Tin & Aluminum Containers = 560 tons
 - PET (plastic #1) = 385 tons
 - HDPE (plastic #2) = 440 tons
 - Other Ridged Plastics (plastic #3 - #7) = 162 tons

Single Stream Recycling

- All recyclables mixed together in one container.
- The collection company saves money by offering SSR because less manpower needed.
- Collection companies see an increase in customers because of the ease of recycling.
- Some data shows an increase in recycling.
- Paper mills have not embraced SSR as there are problems with ground glass in the paper.
- It would cost \$1 - \$1.5 million to retro fit the MRF
- Engineering study concluded that the Agency should continue to bale OCC and send paper out in bulk. Send SSR out in bulk.

Current Contracts and Their Respective Expiration Dates

<u>Contract Party</u>	<u>Nature of Contract</u>	<u>Expiration Date</u>
1. Ulster County	Solid Waste Service	December 31, 2025
2. M&T Trust	Trust Indenture	Redemption of Bonds
3. Denning	Solid Waste Mgt	10/1/2012
4. Esopus	"	"
5. Gardiner	"	"
6. Hardenburgh	"	"
7. Hurley	"	03/1/2013
8. Lloyd	"	Date Bonds Paid Off
9. Marbletown	"	10/1/2012
10. Marlborough	"	"
11. New Paltz	"	Date Bonds Paid Off

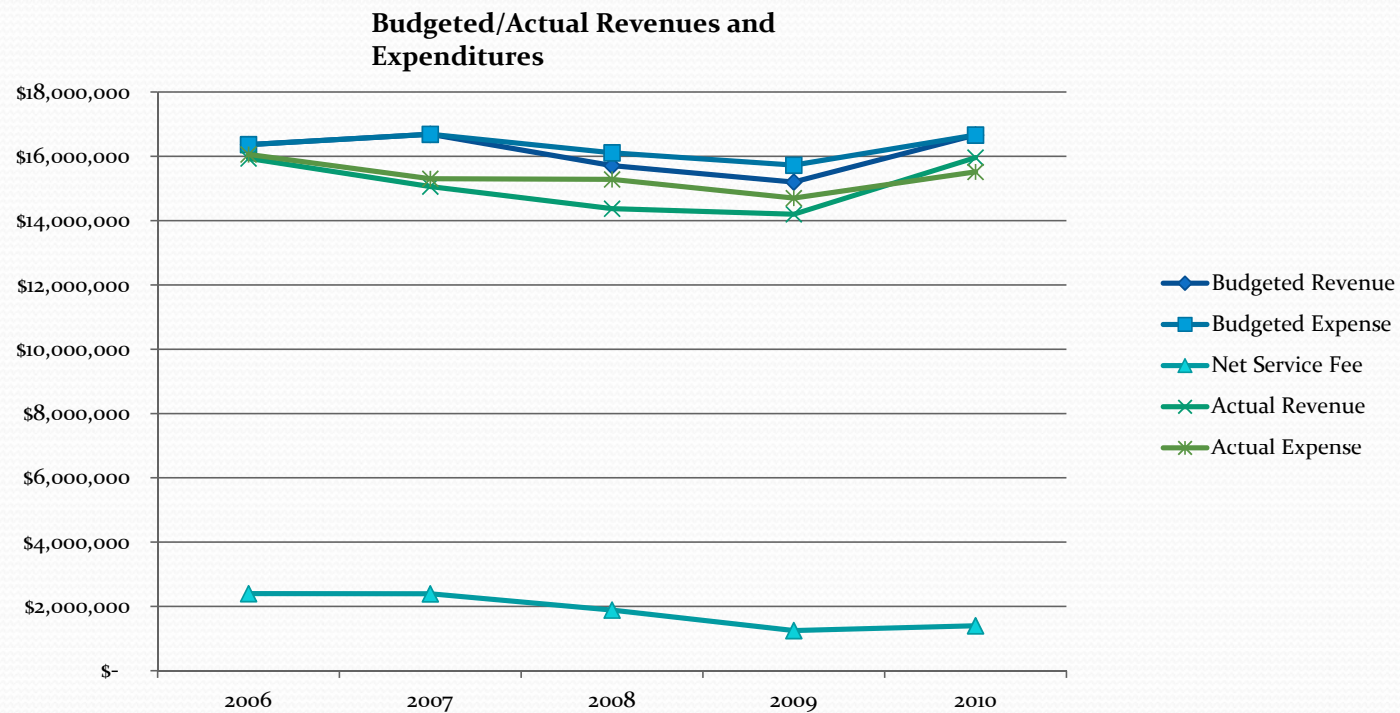
Current Contracts and Their Respective Expiration Dates (cont.)

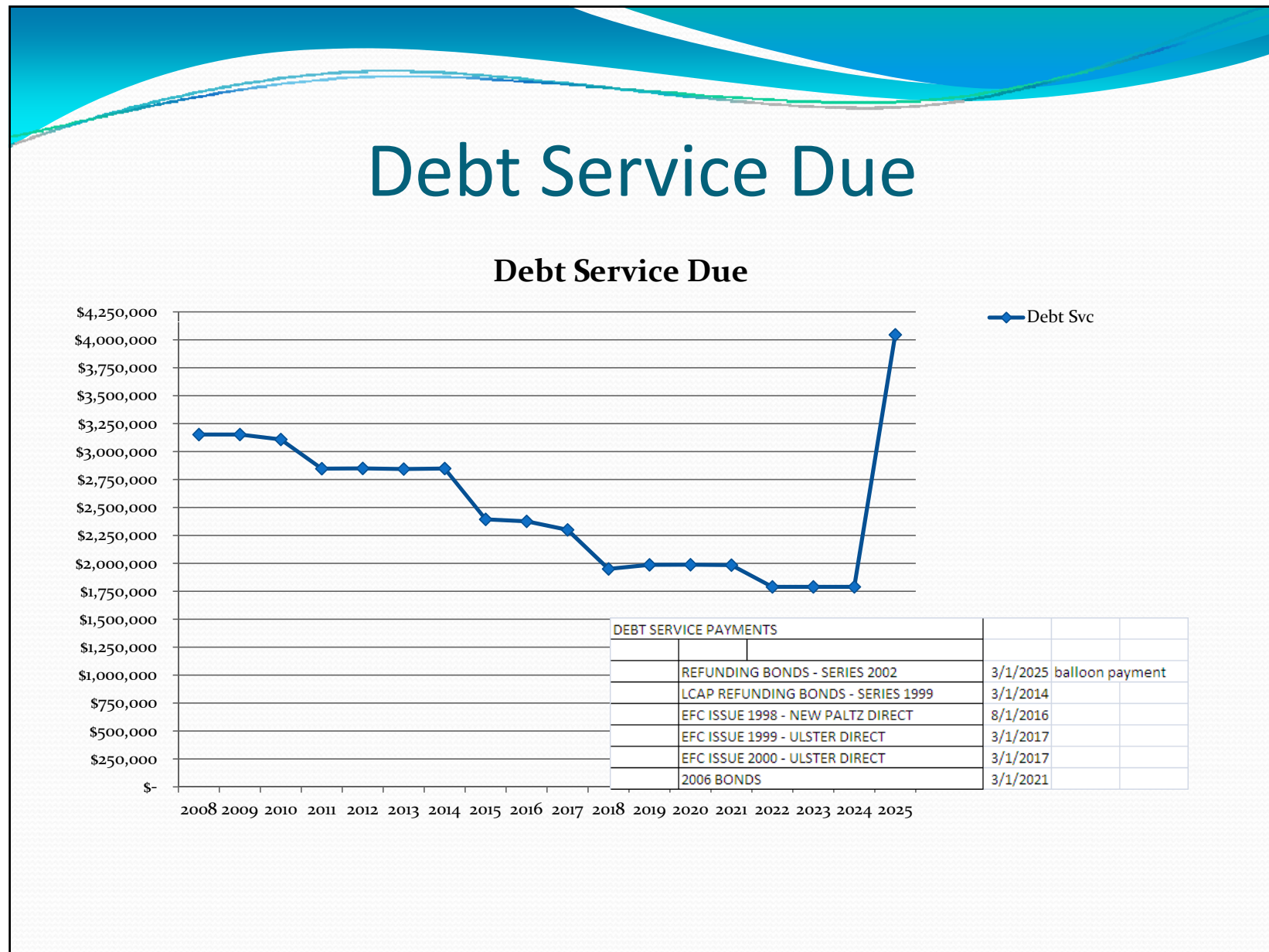
<u>Contract Party</u>	<u>Nature of Contract</u>	<u>Expiration Date</u>
12. Olive	"	10/1/2012
13. Plattekill	"	"
14. Rochester	"	"
15. Rosendale	"	"
16. Saugerties	"	"
17. Shandaken	"	"
18. Shawangunk	"	10/1/2013
19. Ulster	"	Date Bonds Paid Off
20. Wawarsing	"	10/1/2012
21. Woodstock	"	"
22. Kingston (Town)	"	"

Current Contracts and Their Respective Expiration Dates (cont.)

<u>Contract Party</u>	<u>Nature of Contract</u>	<u>Expiration Date</u>
23. Kingston (City)	"	03/1/2013
24. Seneca Meadows	Landfill	December 31, 2014
25. Santaro	Hauler	December 31, 2012
26. D&N	"	"
27. Spada	"	"
28. BFI	Landfill	No End Date
29. County Waste	POP MSW	December 31, 2011
30. WM	POP MSW Landfill	December 31, 2012
31. Royal	PrePay MSW	December 31, 2012
32. WM	Recycling Operations	December 31, 2010
33. New Paltz	Transfr Sta K	September 30, 2016
34. Wing	Employment	December 31, 2012
35. Local 445	Labor	December 31, 2011
36. Rose	Employment	April 18, 2016

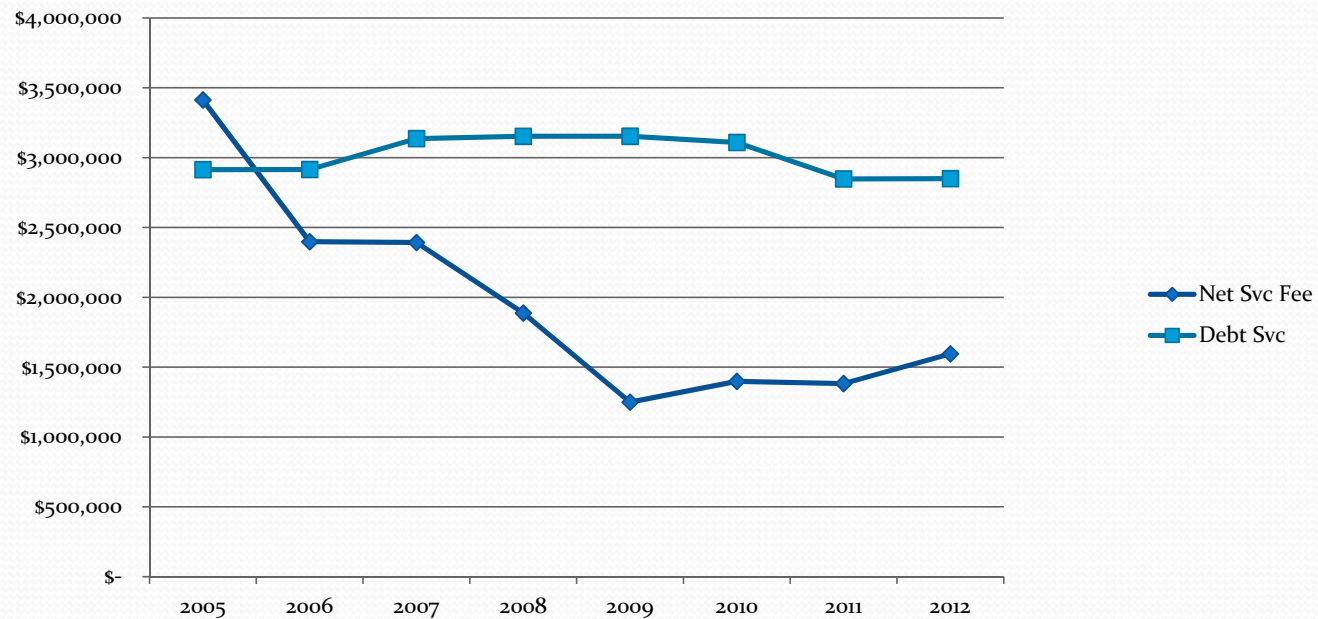
Budgeted/Actual Revenues and Expenditures





Net Service & Debt Service

Net Svc/Debt Svc 2005-2012



Questions?

Ulster County Resource Recovery Agency
Kingston, NY

(845) 336-0600

