

**NEW PALTZ
BACKUP COMMUNITY WATER SUPPLY PROJECT**

**Informational Meeting on
the Proposed
Plains Road Water District
September 10, 2015**

**Our Purpose -- To provide Information
and to respond to Questions related to the
Establishment of a Water District and Use of
the 101 Plains Road Wellsite –**

- Introductions
- Information on the Groundwater Source's Capabilities
- Overview of the Requirements of a Water District
- Anticipated Water Costs
- Open to Questions from the Residents
- Closing Comments

Information on the Groundwater Source's Capabilities

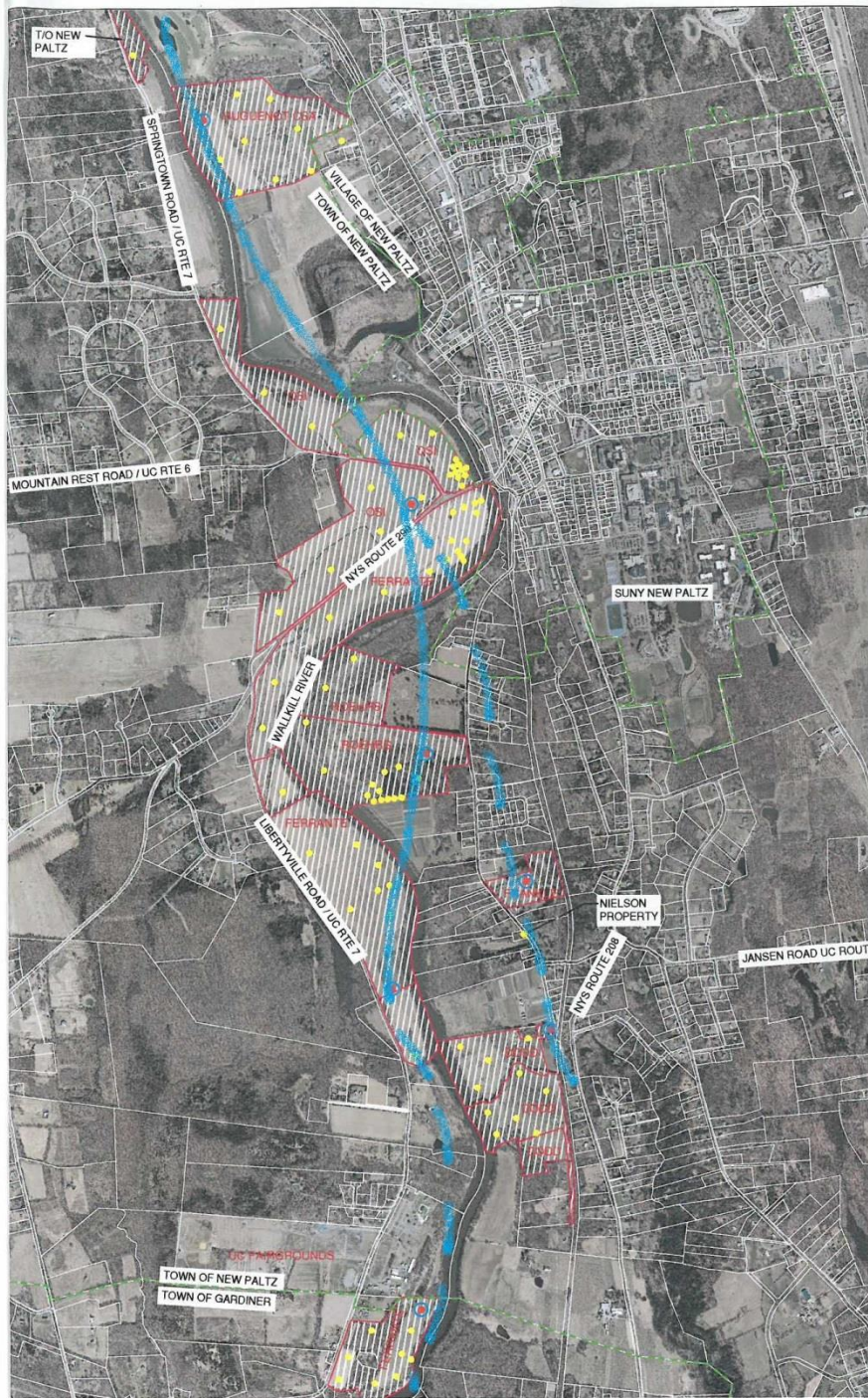
- **Description of the Aquifer –**
 - **What feeds it?**
 - **How do we know it is capable of the supply requirements?**
- **What is the expected stability of its Quality?**
- **What is the rate of withdrawal proposed and what rate can be maintained long term?**



We looked for
water-laid
deposits along the
Wallkill.

Most of the rest
of the Town is
rocky.

Much of the
sediment along
the Wallkill River
is clay, with seams
and deep layers of
sand & gravel

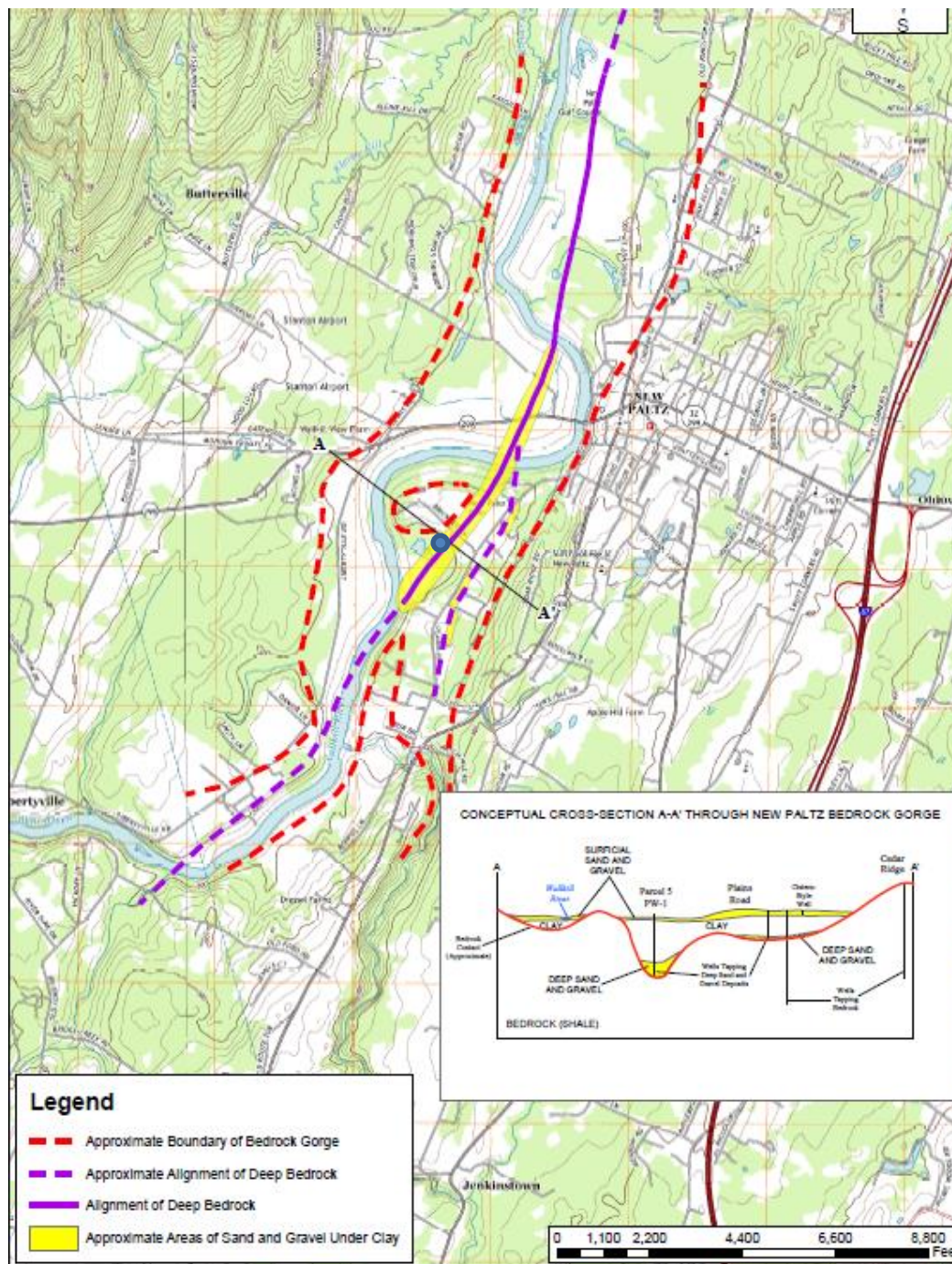


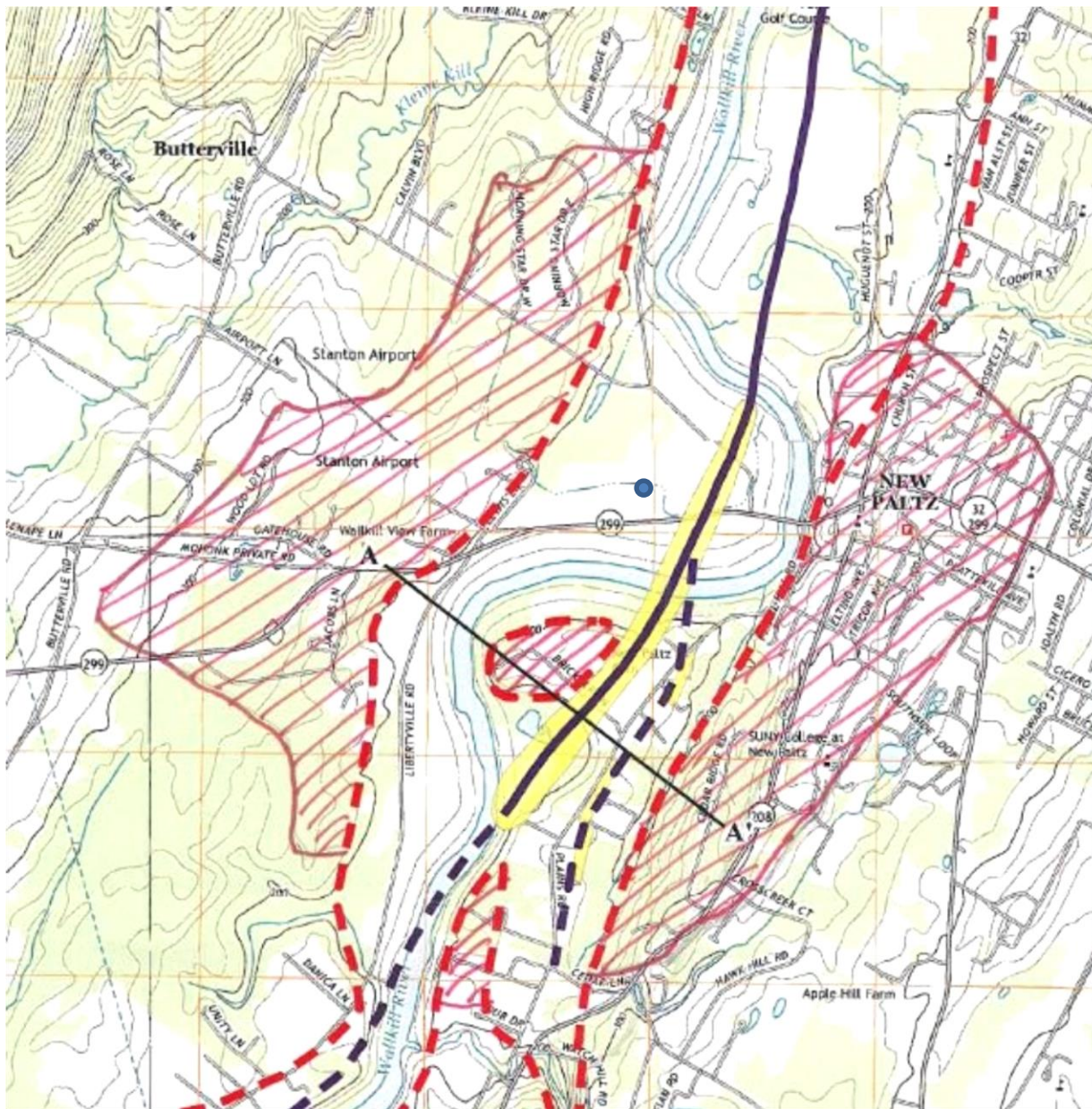
We explored a large area (dots are borings).

We identified a buried bedrock gorge under a narrow part of the Wallkill Valley, and a buried low area under parts of Plains Road.

The best sand and gravel deposit found is west of Plains Road, in the buried gorge.

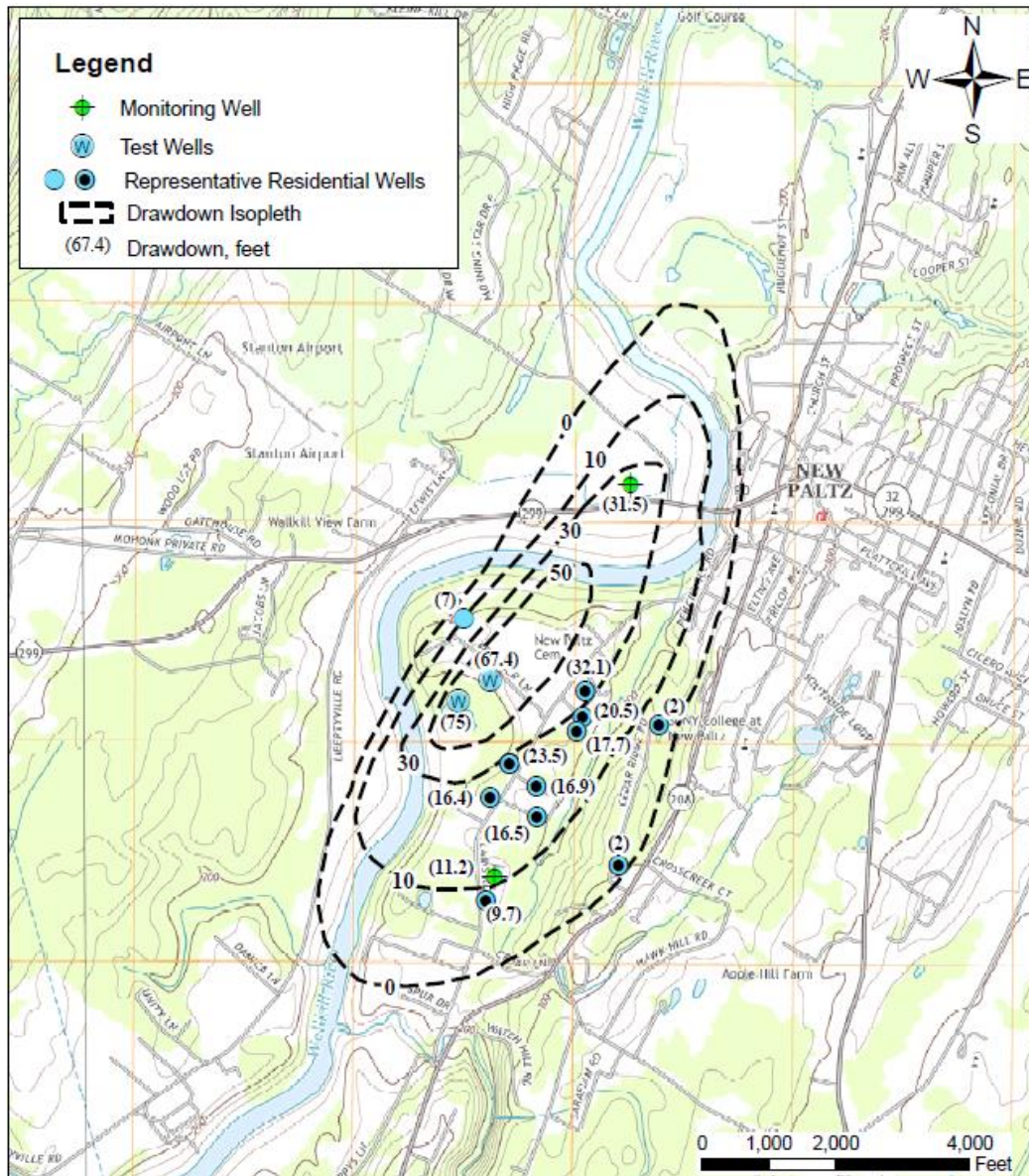
An idea of the
buried valley.





Interpreted Recharge Area

* around 1,200 acres

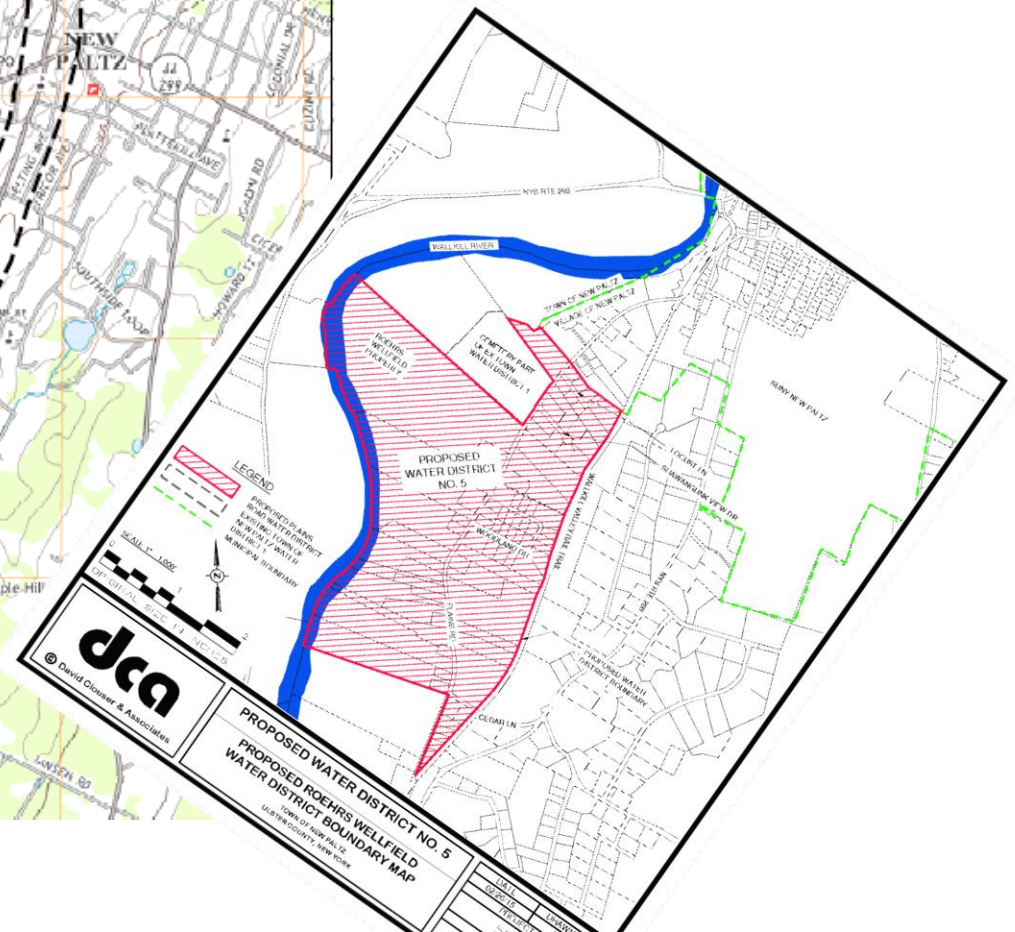
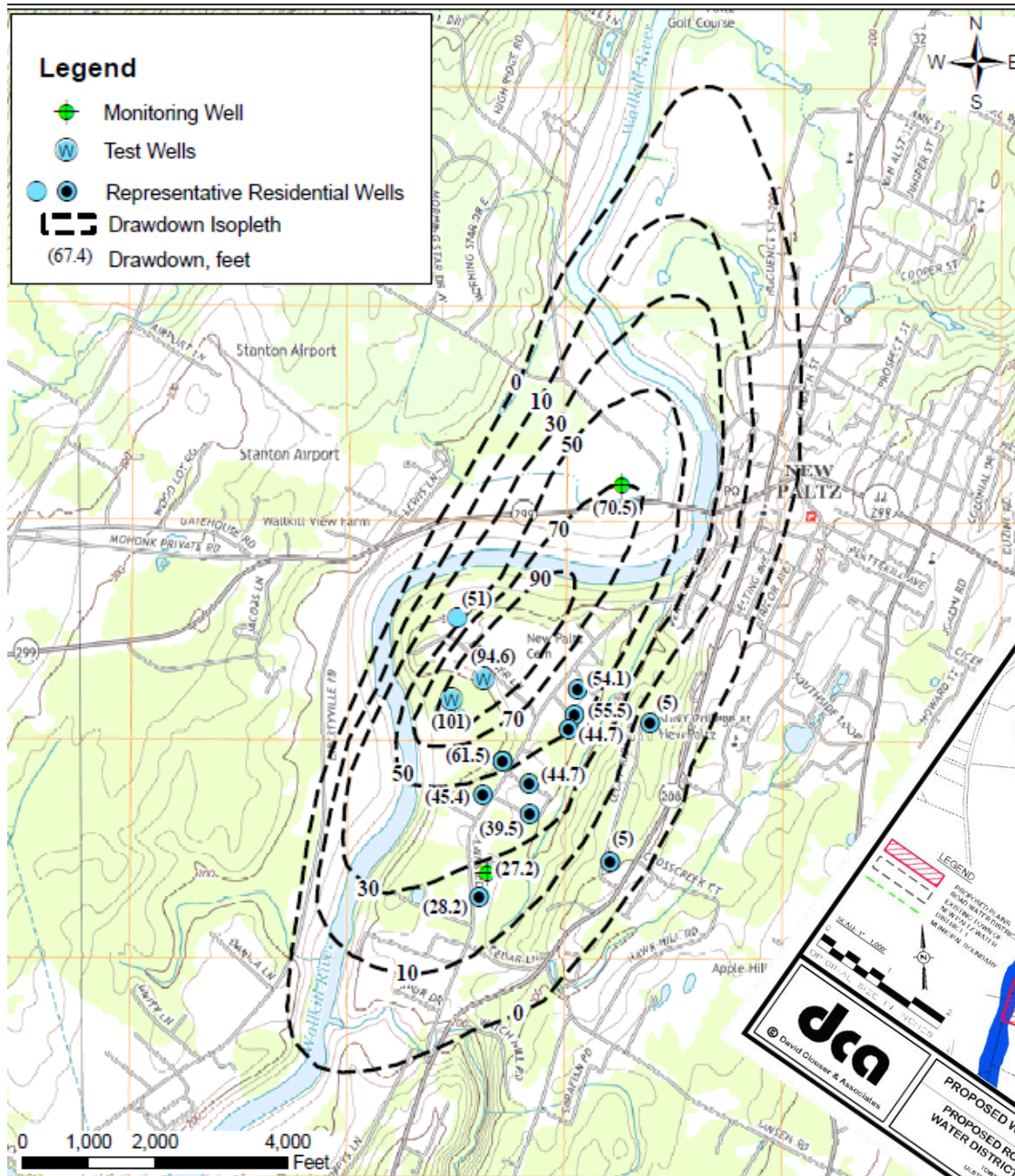


Pumping Test to Support 10-week shutdown:

- * Tested at 400 gpm for 74 hours, followed by 25 hours at 275 gpm
- * Very good water quality
- * 90% back to normal in ~17 days
- * Greatest drawdown follows the valley alignment
- * Drawdown extended under Plains Road neighborhood in both rock and sediment wells

Analysis

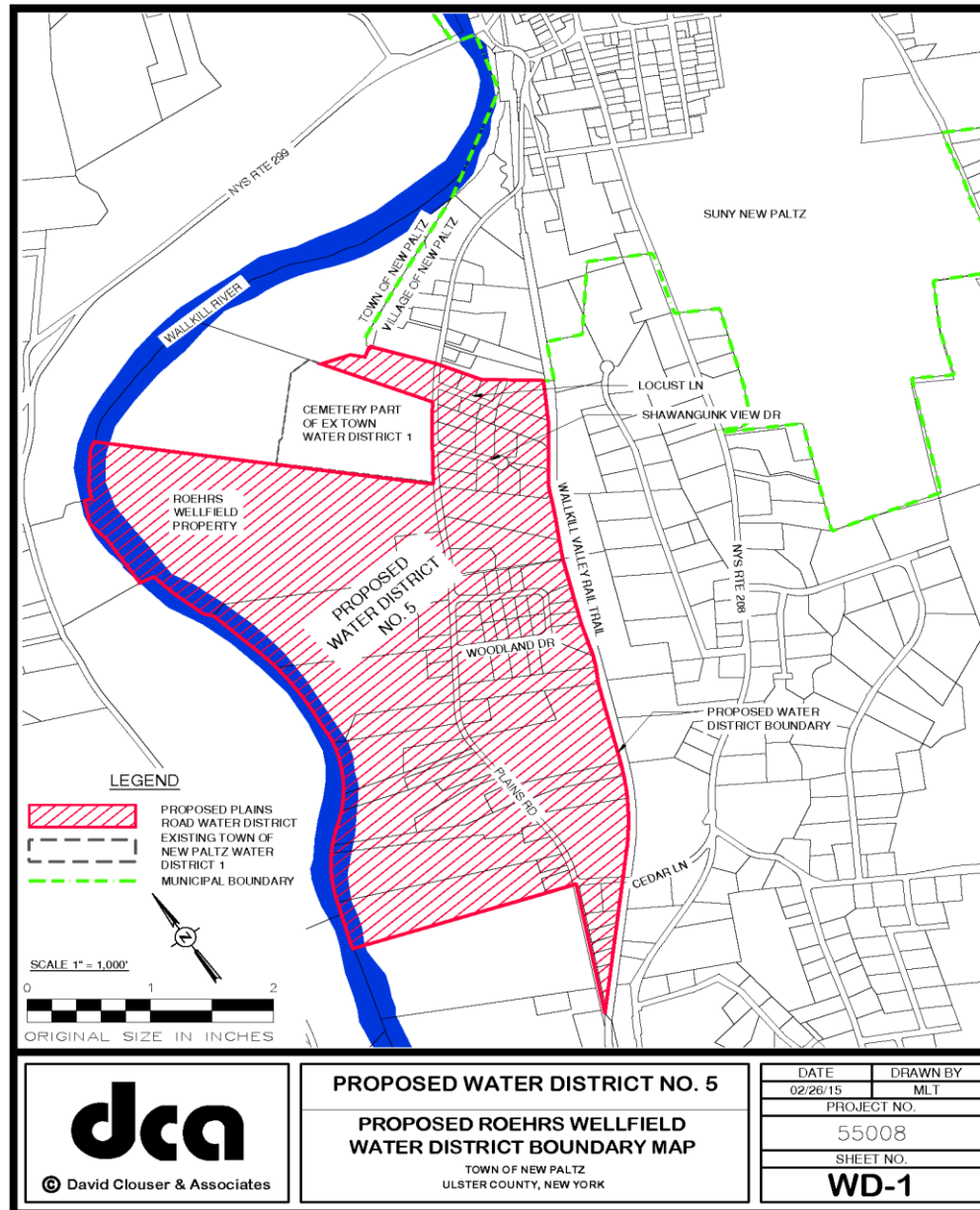
- * 10 weeks at 400 gpm
- * Water District proposed to ensure reliable water during 10-week shutdowns



Overview of the Requirements of a Water District

- **The Process to establish a Water District and the restrictions on how it is operated**
- **Must everyone be included in the Water District?**
- **What are the improvements being proposed?**
- **Who will pay for the improvements?**
- **Who will be responsible for its maintenance?**
- **How long will construction take?**

Water District Boundary Map



Anticipated Water Costs to the User

- **Water District Costs to be reimbursed to the Town –**
 - **Planning, Design, legal and construction costs for the water mains and the fire hydrants**
 - **Water service lines to each home**
 - **User Fees for up to 5 to 6 years for average home water use**
 - **Filters to remove chlorine if requested**
- **Water mains are anticipated to be maintained by the Village DPW; treatment and pumping maintained by the Town Water District**
- **Water Use costs are estimated to be approximately \$18 per month for a household with average use**

Additional Questions and Answers

(remembering that the meeting will end at 9:30)

Please ask any other questions that you may have and our consultants will either answer them directly tonight, or answer them in writing as an addition to the 40 Questions and Answers that you received and the answers provided in tonight's handouts .

Please remember to be brief and there is no need to repeat a question that has already been asked.

Closing Comments

Thank you for attending tonight!

**We hope the information that has
been shared is useful for your
decision on the formation of the
proposed Water District**