

A space-themed background featuring a large, bright sun on the left, the Earth in the center, and several other planets and stars scattered across the dark sky.

# Battery Energy Storage Systems (BESS) in the Town of New Paltz

February 15<sup>th</sup> , 2024

Prepared by: Joseph M. Londa  
Climate Smart Community Task Force  
New Paltz, N.Y.

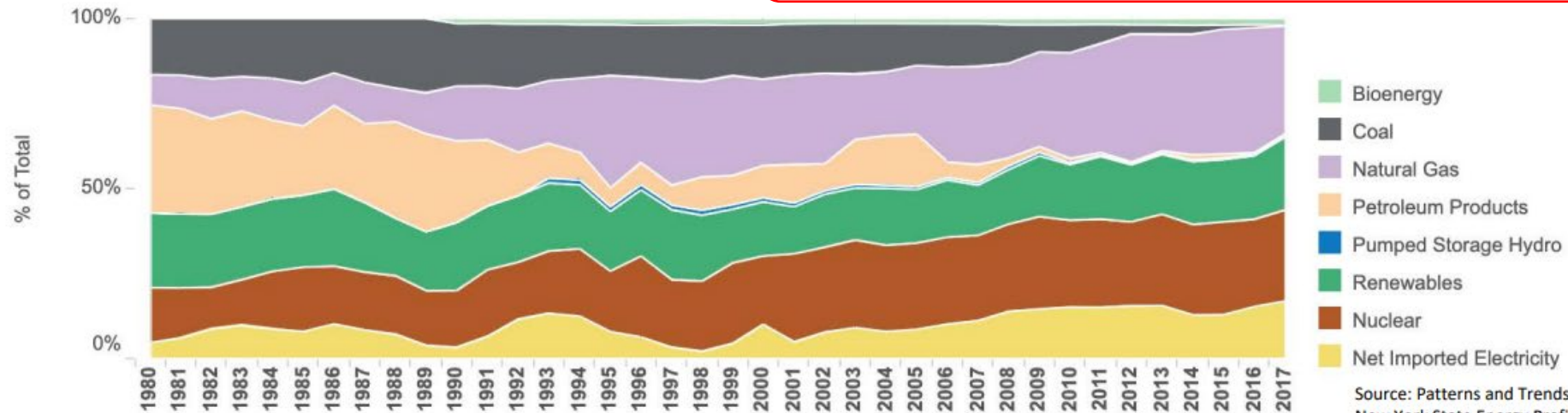
# The Climate Leadership and Community Protection Act (Climate Act)

## Electricity Sector Goals:

- 70% Renewable Electricity by 2030
- 100% Emissions-Free Grid by 2040

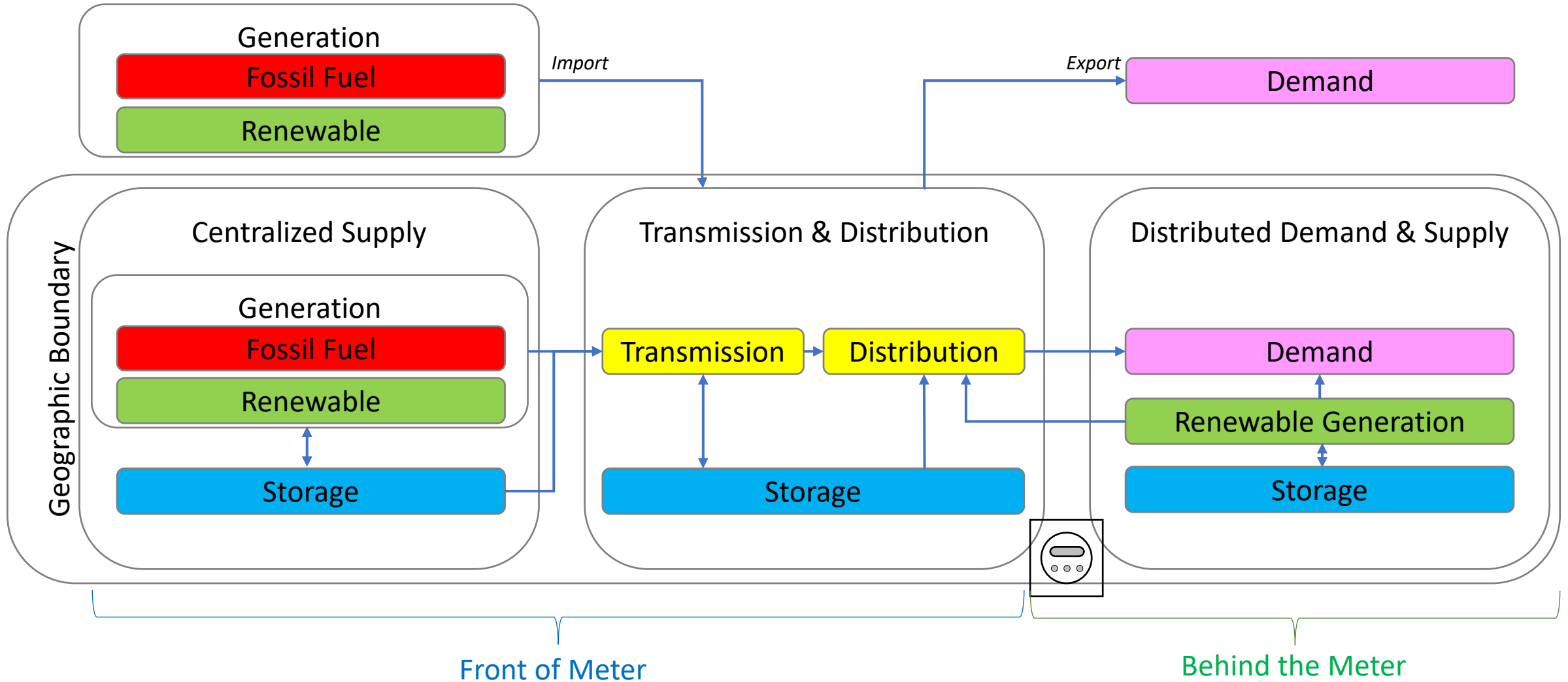
## Technology-Specific Goals:

- 10,000 MW Distributed Solar by 2025
- 9,000 MW Offshore Wind by 2035
- 1,500 MW Energy Storage by 2025; 3,000 MW by 2030\* *Increased to 6,000MW*



Source: Patterns and Trends -  
New York State Energy Profile (NYSERDA)<sup>3</sup>

# Electric Grid Transformation



# Battery Energy Storage Systems (BESS)

Residential



Commercial



Utility



Behind-the-meter  
"Customer-side"

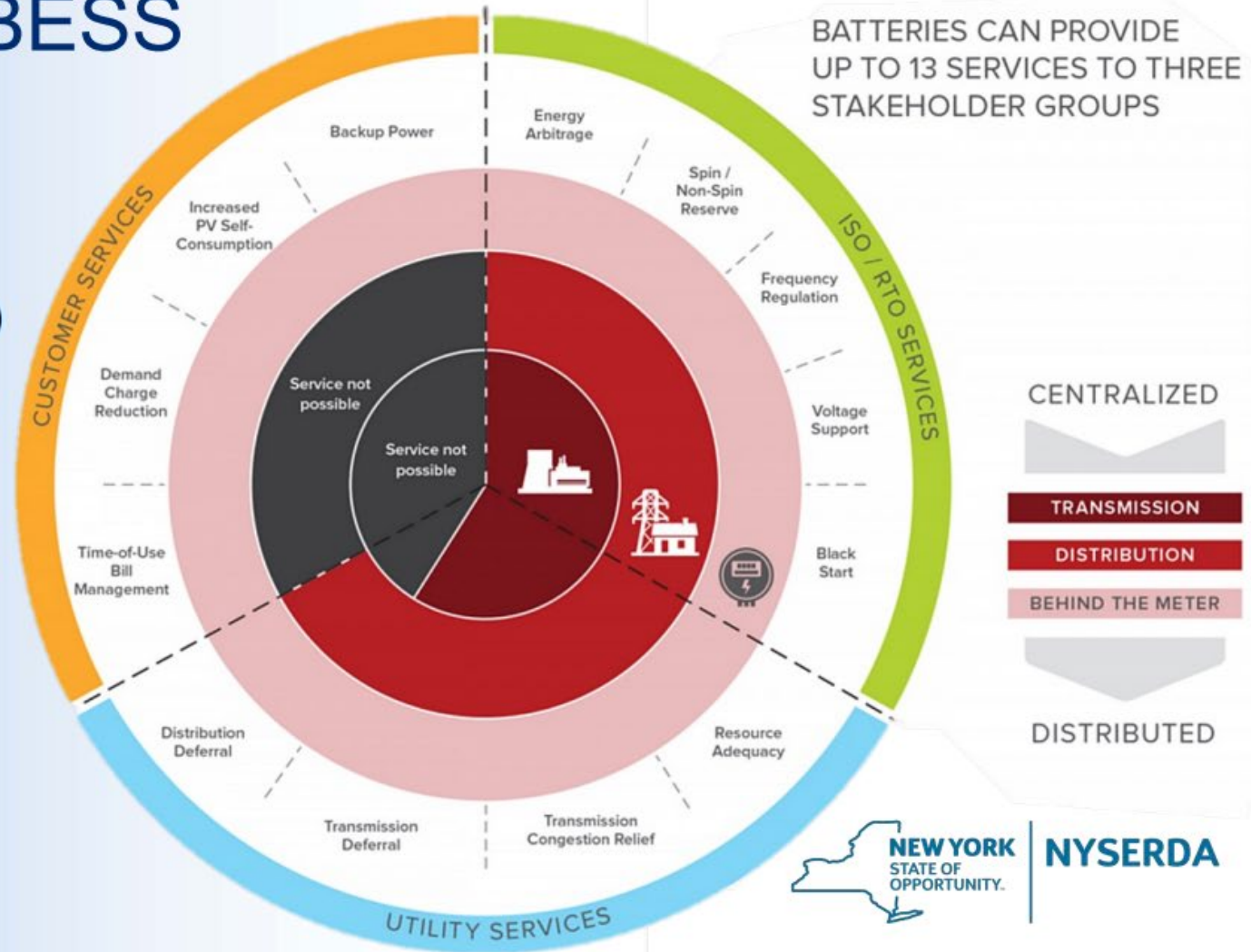
Front-of-the-meter  
"Utility-side"



# Applications for BESS

## Services by group:

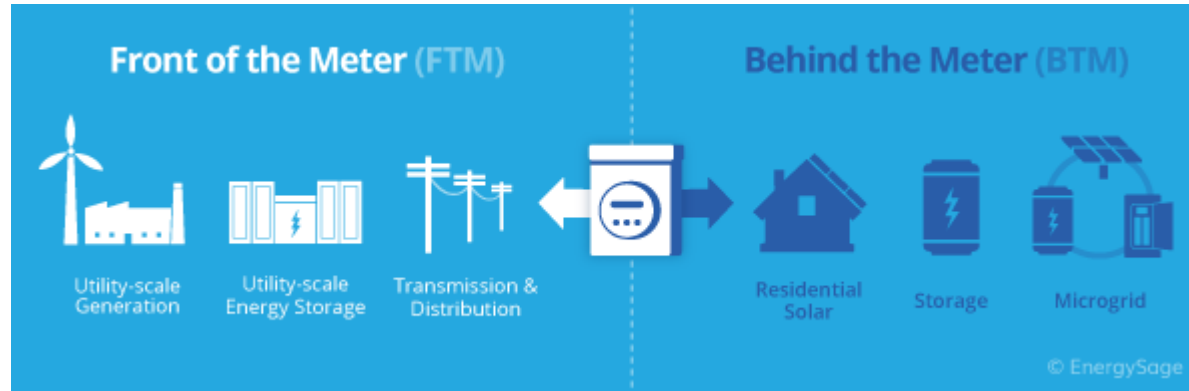
- Customer Services (Residential/Commercial)
- Utility Services
- Grid Services (ISOs / RTOs)



# Propose Changes to Town of New Paltz Laws and Processes for BESS Install

- **Draft Unified SolarPV and Battery Permitting Application**
  - *Consolidated Permit Application for Solar PV and/or Batteries (Tier 1 only) for Single Family, Multi Family, and Commercial structures.*
- **Draft New Paltz Code 140**
  - *Updates “§ 140-51.3. Planning Board review” to include item 5 that defines the criteria the Building Inspector will use to waive the need for a Site Plan Review*
- **Draft New Paltz Law for BESS Installs**
  - *Adds to the Town of New Paltz Code regulations for the installation and use of battery energy storage systems (Tier 1 and 2)*
- **140-4C Word Usage and Definitions and 140-8 Permitted Uses**
  - *Updates Word usage and definitions for BESS and the Permitted Uses by Tier*

# Zoning and Process Summary Table



- All Zones
- Use Permit Application

BESS Tier 1 Less than or Equal to 600kWh		Single Family Multi Family Commercial
BESS Tier 2 Greater than 600kWh	Transmission Line Connected	Multi Family Industry Institutions

- Allowed in R1 Zoning
- Use Site Plan Review

- Not Zoned for Wet Land and R1
- Use Site Plan Review