



WVLT Rail Trail Interpretive Signage Phase 2



“Caring for our River” installed on RT on bridge over Walkkill River (Town)

“Wetlands and Wildlife” installed on RT at entrance to WVLT Weston Boardwalk (Village)

Three-Sided Kiosk- already installed on RT at Waterstreet Market-replacing all three panels. (Village)

“Enjoy a moment of Zen installed on RT south of the Plattekill Gorge Bridge but north of the benches. (Town)

**Arrows are at approximate location!*



WALLKILL VAL
LAND TRUS

Caring for Our River Cuidar nuestro río



The first people to live here called this valley, "Where plums abound."

The Lenape knew this fertile valley and river as Twischsawkin. After their displacement, the Dutch renamed it. The Wallkill River originates in Sparta, New Jersey, and with a watershed of 785 square miles, it is one of the largest water systems flowing into the Hudson River.

Imagine a Wallkill River that is safe to swim in, one without pesticides and harmful substances and algal blooms. Water quality and environmental advocacy groups, like the Wallkill River Watershed Alliance and Riverkeeper, are working with New York State's DEC to protect and restore this River's waters. It's a challenge since there is not just one big polluter. All activities that happen on land affect the nearby waterways. Rain and stormwater wash exposed soil, nutrients, road salts, motor oil, pesticides, and other chemicals from streets and farms. Leaking septic systems and failing sewer plants contribute additional nutrients and other pollution, such as pathogens. All of these contribute to the condition of the river.

Los pueblos originarios llamaron a este valle "Donde abundan las ciruelas".

Los lenape conocían este valle fértil y río como Twischsawkin. Tras su desplazamiento, los holandeses le cambiaron el nombre por el de río Wallkill. Este río nace en Sparta, Nueva Jersey, y es uno de los sistemas hídricos más grandes que desembocan en el río Hudson, con una cuenca de 785 millas cuadradas.

Imaginemos un río Wallkill en el que sea seguro bañarse, sin pesticidas ni sustancias nocivas ni floraciones de algas. Grupos de defensa de la calidad del agua y el medio ambiente, como Wallkill River Watershed Alliance y Riverkeeper, trabajan con el Departamento de Conservación Ambiental del estado de Nueva York para proteger y recuperar las aguas de este río. Es un reto porque no hay un solo gran contaminador, ya que todas las actividades que se realizan en la tierra afectan a los cursos de agua cercanos. Las aguas pluviales arrastran tierra, nutrientes, sales de carretera, aceite de motor, pesticidas y otros productos químicos de las calles y las granjas. Los sistemas sépticos con fugas y las plantas de alcantarillado defectuosas aportan nutrientes adicionales y otros tipos de contaminación, como patógenos. Todo esto contribuye a la calidad del agua del río.

Left: © Daniel Case · CC BY-SA 3.0 Deed. Background: © Michael O'Donnell

Our River Needs You

The water that flows through our communities is our responsibility. Volunteers and citizen scientists are working to change the River's future. Fresh, clean water is essential to life, and with everyone's help, working together, we can make that a reality for the Wallkill.

Nuestro río nos necesita

El agua que fluye por nuestras comunidades es nuestra responsabilidad. Voluntarios y "ciudadanos científicos" trabajan para cambiar el futuro del río. El agua dulce y limpia es esencial para la vida, y con la ayuda de todos, trabajando juntos, podemos hacer que esto sea una realidad para nuestro río Wallkill.



Photo by Tony Adams



Producing via Timely Signs- Intent is to attach it to bridge over Wallkill in a way that we can easily remove it when bridge improvements happen, then install it again.



WALLKILL VALLEY LAND TRUST

Wetlands and Wildlife

Fauna y flora de los humedales



Saturated by water, wetlands are precious habitats

Wetlands are called swamps, marshes, bogs, seeps, and swales. They have moist soil conditions and a distinctive set of characteristic plant species in common. However, because they are typically low-lying, they are disproportionately affected and impacted by what is happening elsewhere in their watersheds. They absorb flood waters, improve water quality, and help to regulate river water levels.

Saturados de agua, los humedales son hábitats valiosos

Los pantanos, marismas, turberas, rezumaderos y ciénagas se denominan humedales. Tienen en común unas condiciones de suelo húmedo y un conjunto característico de especies de plantas. Como los humedales suelen situarse en zonas bajas, se ven desproporcionadamente afectados e impactados por lo que ocurre en otras partes de sus cuencas hidrográficas. Al absorber el agua de las inundaciones, mejoran la calidad del agua y ayudan a regular el nivel de los ríos.

Protected wetlands are invaluable to wildlife and the health of our rivers; they are breeding and feeding grounds for a diversity of wildlife, including birds, mammals, reptiles, amphibians, and invertebrates. In the fall, birds feed on arrowwood and nannyberry fruit. During the summer, butterflies, and bees feed from button-bush flowers.

Los humedales protegidos tienen un valor incalculable para la flora y fauna, y para la salud de nuestros ríos, ya que son zonas de cría y alimentación para una gran diversidad de fauna, como aves, mamíferos, reptiles, anfibios e invertebrados. En el otoño, los pájaros se alimentan de los frutos de especies de arbustos Viburnum. En el verano, las mariposas y las abejas se alimentan de las flores del arbusto jazmín tallo (Cephalanthus occidentalis).



Left: Buttonbush © bwrightcc · CC BY-NC 4.0 Deed. Background: Swamp Milkweed © kacarter · CC BY-NC 4.0 Deed.

Species such as Joe Pye weed are iconic of eastern wetlands. Its flower nectar feeds pollinators and the stems and leaves host insect larvae.

Las especies de Eutrochium, llamadas "hierba Joe Pye", son icónicas de los humedales orientales. El néctar de sus flores alimenta a los polinizadores y sus tallos y hojas albergan larvas de insectos.



Producing via iZone- thicker sign attached to two bases (like the one by the Post Office). Location on RT at entrance to small boardwalk which is the 4 acres WVLT owns called the Weston parcel. In memory of Ted Kerpez from DEC (there will be a small plaque added to the sign stand)



WALLKILL VAL
LAND TRUS

Enjoy a Moment of Zen Disfrutar de un momento de zen



On a clear day, the iconic view of the Gunks is perfection!

This vista has all the elements that make this Rail Trail remarkable. Sitting here or looking out to the west across the rural agricultural landscape, you feel connected to nature. The ridge in the distance, the sparkling stream below, and perhaps a bald eagle resting on the magnificent sycamore over the farm fields — make this a favorite place for many locals and visitors. Natural rest spots like this help people feel calm and centered — they are restorative. Open spaces and areas of natural beauty are essential to this community. Even the name of this place, the Plattekill Gorge, comes from the Dutch for "calm stream." These rolling hills are a visual treasure, and they help connect us to the centuries of people for whom this landscape was precious.

En un día despejado, ¡la vista icónica de los Gunks es la perfección!

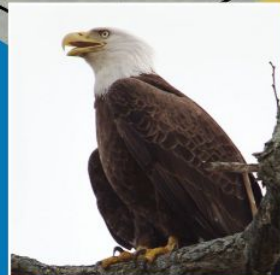
Esta vista reúne todos los elementos que hacen que este Sendero Ferroviario sea extraordinario. Mirando hacia el oeste a través del paisaje agrícola rural, se siente la conexión con la naturaleza. La cresta en la distancia, el arroyo brillante debajo, y tal vez un águila calva descansando en el sicomoro magnífico sobre los campos de cultivo, hacen que este sea un lugar preferido para muchos lugareños y visitantes. Los lugares naturales de descanso son reconstituyentes ya que ayudan a las personas a sentirse tranquilas y centradas. Los espacios abiertos y las zonas de belleza natural son esenciales para nuestras comunidades. Incluso el nombre de este lugar, el arroyo "Plattekill", viene del holandés "arroyo tranquilo". Estas colinas onduladas son un tesoro visual, y nos ayudan a conectarnos con las generaciones de personas para quienes este paisaje era precioso.



The ridge line of the Shawangunk Mountains, including the white quartz conglomerate cliffs and Skytop's tower, are iconic to this landscape.

La cresta de las montañas Shawangunk, incluidos los acantilados de conglomerado de cuarzo blanco y la torre de Skytop, son emblemáticos de este paisaje.

© John Mazer - CC BY-NC-SA 2.0



New York once had only a single pair of eagles. Through protection and restoration work, they are back from the brink. One more reason to protect what we love.

Nueva York llegó a tener una sola pareja de águilas. Los proyectos de protección y restauración han permitido rescatar a las águilas que estuvieron amenazadas de extinción. Una razón más para proteger lo que amamos.

© Andrew Black - CC BY-NC 4.0 Deed

Left: XXXXX © XXXX. Background: © George Bremer - CC BY-NC-ND 2.0 Deed.



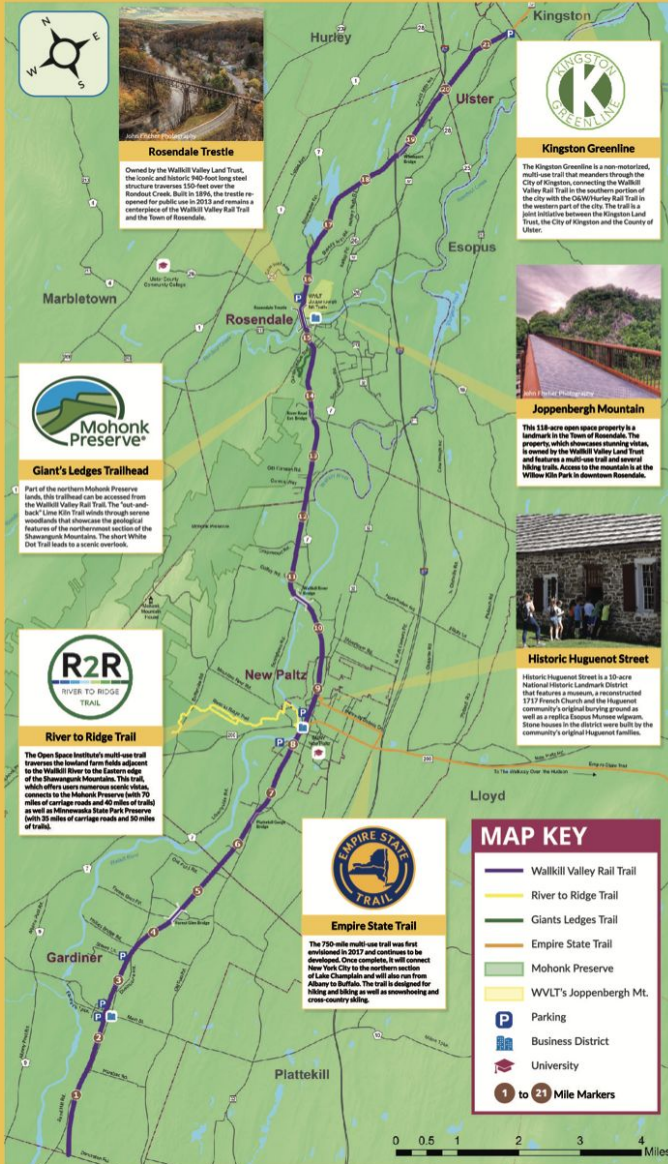
Producing via iZone- thicker sign attached to two bases (like the one by the Post Office). Location on RT south of bridge at Plattekill Gorge, but south of benches.



WALKKILL VALLEY LAND TRUST



Walkkill Valley Rail Trail



TRAIL SAFETY & ETIQUETTE

The Walkkill Valley Rail Trail is a permanently protected multi-use trail, welcoming walkers, hikers, joggers, bicyclists, equestrians, dog walkers, cross-country skiers and snowshoers. For your safety and enjoyment we ask you to observe the following rules.

ALL USERS

- No motorized vehicles at any time.
- Be alert and respectful of other users.
- Use caution at road crossings.
- Always remain on the trail as it passes by private property.
- Stay to the right to allow others to pass.
- Always yield to equestrians.
- Dogs must be leashed at all times.
- Clean up after your animals.
- Carry-in Carry-out park. Please take your trash with you.
- Fires and discharging firearms on or next to the trail is strictly prohibited.

CYCLISTS

- Ride at moderate speed (15 mile max).
 - Alert other users when approaching from behind.
 - Helmets required.
- Visit our website for ebike policy

EQUESTRIANS

- Ride at a moderate speed appropriate for multi-use trails.
- Announce your intention to pass others and pass only on the left.
- Helmets required, dismount and walk across bridges.

Replacing the three sided kiosk signs at Waterstreet Market.

Kiosk will remain, old plexiglass and signs removed and replaced by:

Facing Rail Trail:
Wayfinding RT Map sign (same as existing along the RT, but scaled to fit the kiosk holder).

Timely Signs will remove old and install the new under guidance of WVLT



WALKKILL VALLEY LAND TRUST
LEARN MORE ABOUT OUR WORK
WalkkillValleyLT.org

HISTORIC
HUGUENOT STREET
Helping Visitors Understand the Historical Forces That Have Shaped America

At our ten-acre National Historic Landmark District in New Paltz, New York, visitors experience over three hundred years of history across seven historic stone-house museums, a reconstructed 1717 French Church, the community's original burying ground, and a replica Esopus Munsee wigwam. Period rooms and exhibits tell the stories of a French-speaking Protestant settlement as it evolved over time, and also reveal the history of the area's Indigenous and enslaved African peoples and Dutch settlers.

(845) 255-1660
www.huguenotstreet.org
81 Huguenot Street, New Paltz, NY 12561

Replacing the three sided kiosk signs at Waterstreet Market.

Kiosk will remain, old plexiglass and signs removed and replaced by:

Facing Route 299, top half sign with information and graphics from Historic Huguenot Street. Bottom half with information and graphics from OSI re: River to Ridge.

Timely Signs will remove old and install the new under guidance of WVLT

Protecting the Shawangunk Ridge and Beyond



The Open Space Institute has protected more than 36,000 acres of land—more than twice the size of Manhattan—on and around the storied Shawangunk Ridge. OSI is forging a lasting preservation legacy in the Shawangunks, while expanding recreational opportunities for all.


- OSI's efforts in the region include:
- Construction and stewardship of the River-to-Ridge Trail.
 - More than doubling the size of Minnewaska State Park Preserve.
 - With the Walkill Valley Land Trust, improving the Walkill Valley Rail Trail from Kingston to Gardiner, and restoring the iconic Rosendale Trestle.
 - Revitalization and expansion of the O&W Rail Trail.



VISIT THE RIVER-TO-RIDGE TRAIL

The Open Space Institute's River-to-Ridge Trail is a scenic six-mile loop trail perfect for visitors of all abilities. The trail allows hikers, cyclists, and others direct access to 90 miles of recreational carriage roads and trails at the Mohonk Preserve and the Minnewaska State Park Preserve.

The trail begins on the edge of the Village of New Paltz just west of the Carmine Liberta Bridge on Route 299. The trailhead and parking area is located at 41 Springtown Road, New Paltz, New York 12561.

Learn more about the River-to-Ridge Trail: 

ABOUT THE OPEN SPACE INSTITUTE

Founded in 1974, the Open Space Institute is a national conservation leader, partnering in the protection of more than 2.4 million acres across the Eastern US and Canada.

As a trusted nonprofit organization, OSI protects land for clean drinking water, public recreation, healthy communities, wildlife habitat, and climate protection.

OPEN SPACE INSTITUTE
openspaceinstitute.org

Connect with us.
 facebook.com/openspaceinst
 @openspaceinstitute

From the Foothills to the Ridge



Saving the Land for Life

Mohonk Preserve's protects the northern Shawangunk Ridge and inspire people to care for, enjoy and explore the natural world. As New York's largest nonprofit nature preserve, we protect over 8,000 acres of mountain cliffs, forests, fields, wetlands and streams in five Ulster County towns, including over 2,500 acres in the Town of New Paltz.



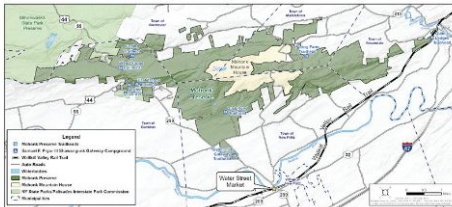
A Commitment to Conservation

Over 1,400 species of plants and animals live on the Preserve in natural communities that shift seasonally and over time. The Preserve's Conservation Science team studies and manages these communities to promote healthy biodiversity. We're also prioritizing climate resilience, which includes dealing with invasive non-native plants and insects in our fields and forests.



Gateway to Nature

Just 1.4 miles from this sign is Mohonk Preserve's Testimonial Gateway Trailhead, with over 800 acres of woodlands, wetlands, and grasslands. Named for the Testimonial Gateway Tower, a local historic landmark, this area features many level carriage roads and trails, along with opportunities to travel up the ridge past historic farmhouses to more mountainous terrain.



Choose Your Own Adventure

We invite you to get into nature at Mohonk Preserve through our public programs, guided hikes and special events, or by talking a walk, ride, run or climb on our carriage roads, trails and cliffs. For more information, visit www.mohonkpreserve.org.

Replacing the three sided kiosk signs at Waterstreet Market. Kiosk will remain, old plexiglass and signs removed and replaced by:

Facing Waterstreet Market entrance with information and graphics from Mohonk Preserve

Timely Signs will remove old and install the new under guidance of WVLT