

A Community Preservation Plan For the Town of New Paltz



Town Board Meeting
June 18, 2020

Presentation by Cara Lee, Julie Seyfert-Lillis, Ted Fink, and Ingrid Haeckel
on behalf of Community Preservation Task Force



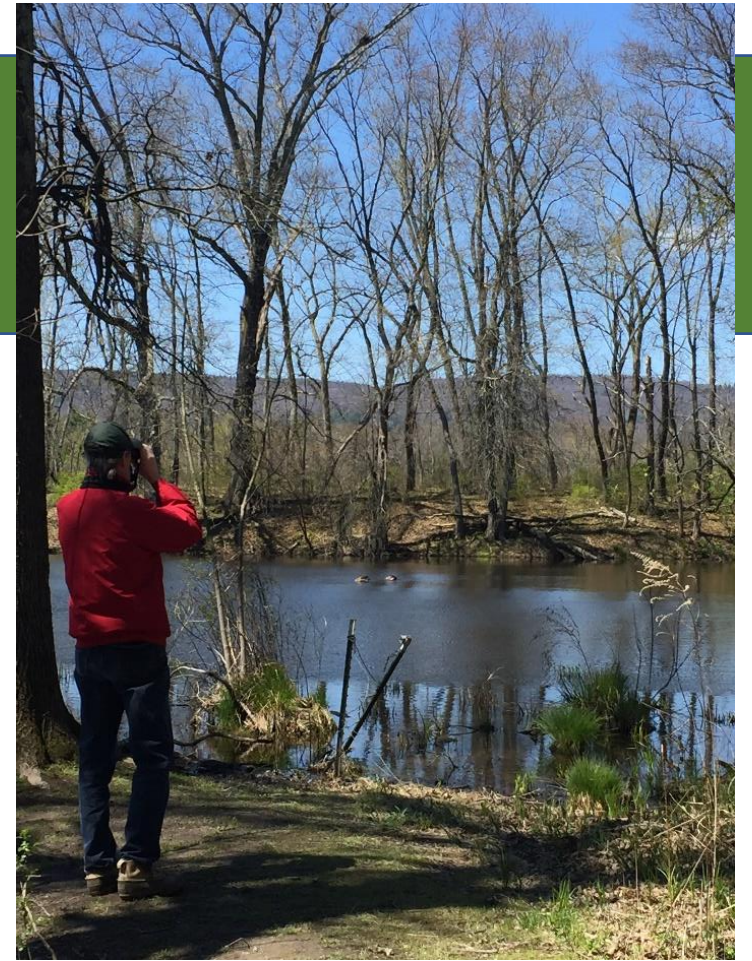
An aerial photograph of a lush, forested valley. A winding river flows through the center, reflecting the sky. The trees are in various shades of green and yellow, suggesting early autumn. In the background, a prominent hilltop with a small structure is visible under a soft, hazy sky. The overall scene is peaceful and scenic.

New Paltz - Our Setting

Photo: Bob Fagan

Natural Resources

- Clean Water
- Forests and Farms
- Recreational Open Space
- Habitat and Wildlife
- Scenery



Community Character

- Historic Properties and Features
- Rural, Small-Town Feeling
- Living Near Nature
- Cultural Richness



Recreation and the Economy

- Proximity to Shawangunk Ridge
- Expanded Trail Network
- Agro-tourism
- Vibrant Economy



Conservation Has Worked in New Paltz But Isn't Done.....



- Conservation has created value in New Paltz
- Millbrook Preserve, Taliaferro Farm, Wallkill Valley Rail Trail, Testimonial Gatehouse, River to Ridge Trail, Historic Huguenot Street.....
- Next chapter for conservation is now



2020 Community Survey

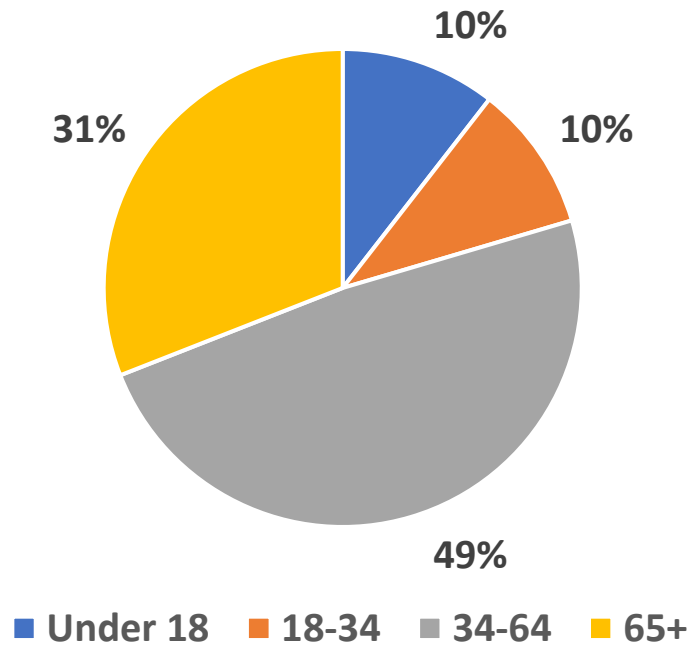
- On-line Survey (Survey Monkey)
- Questions Created by Task Force
- Goal: Learn About Public Priorities for Preservation
- Social Media, Town Web Site, and Postcard invite
- March 28th thru April 30th (5 weeks)
- 506 respondents



Who Responded

79% of Respondents were 34 and Older

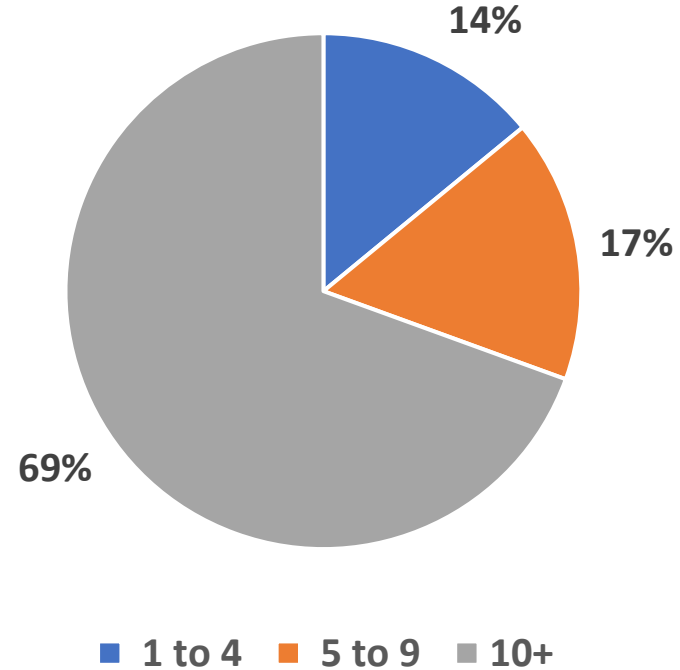
Combined Age Distribution



Who Responded

Largest % have lived in New Paltz More than 10 Years

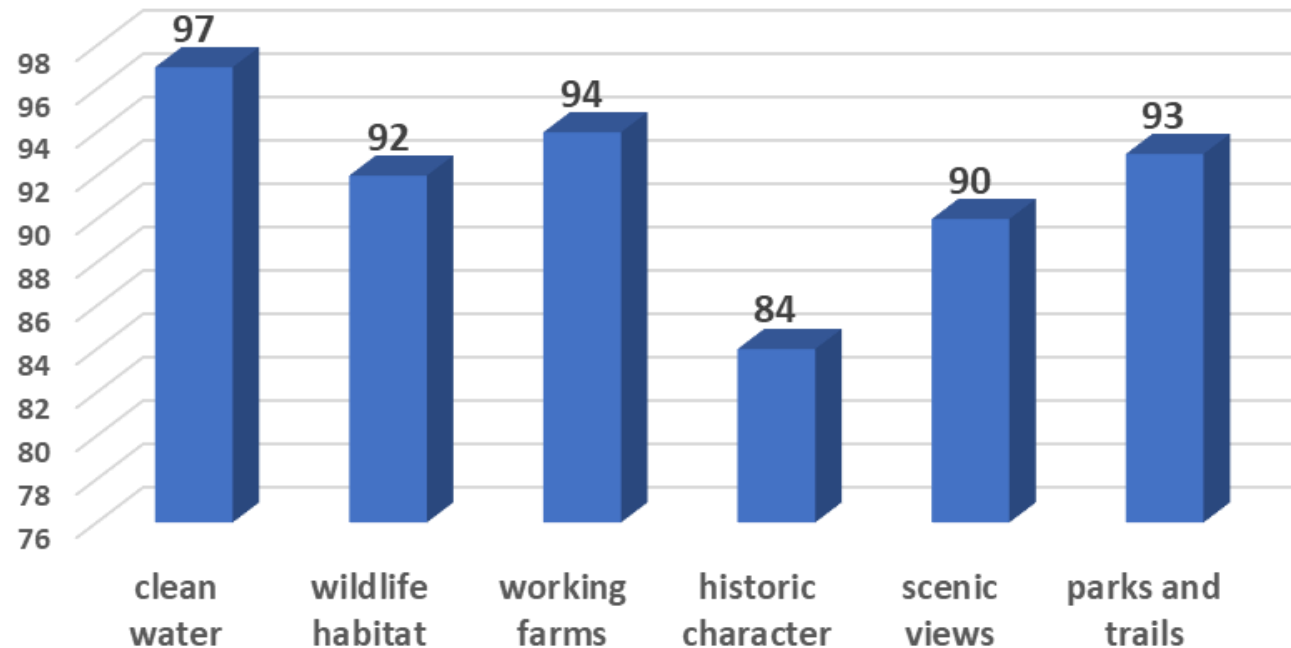
Combined Years Lived in New Paltz



Conserving Resources

“Very Important” and “Important” Combined

Combined Responses (%)

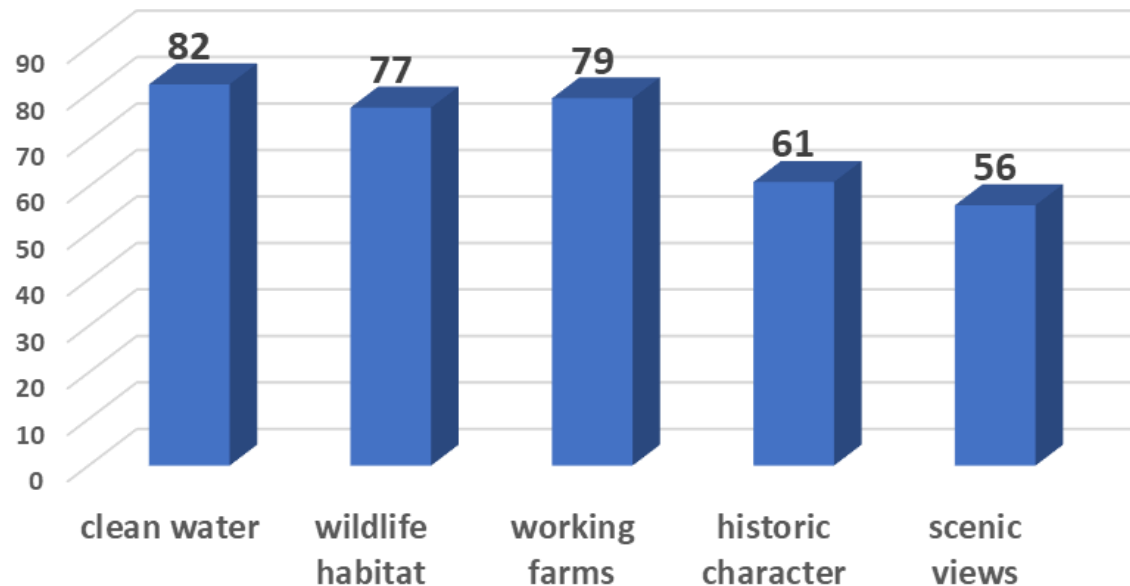


Concern for Loss of Resources

- “Concerned” and “Very Concerned” Combined



Concern for the Decline and Loss Combined (%)



Concern about Sprawl



62% were “concerned” or “very concerned” about sprawl in New Paltz.



Comments



“I appreciate the work that has been going on for a long time in New Paltz - preservation of nature and natural areas for recreation and environmental protection. That's a big part of our decision to move here.

How much is enough? As much as we can afford, I guess. The natural beauty of the area has been a priceless resource to help make the current "Pause" more tolerable. Such a wise investment for now and the future!”



Community Preservation Plan

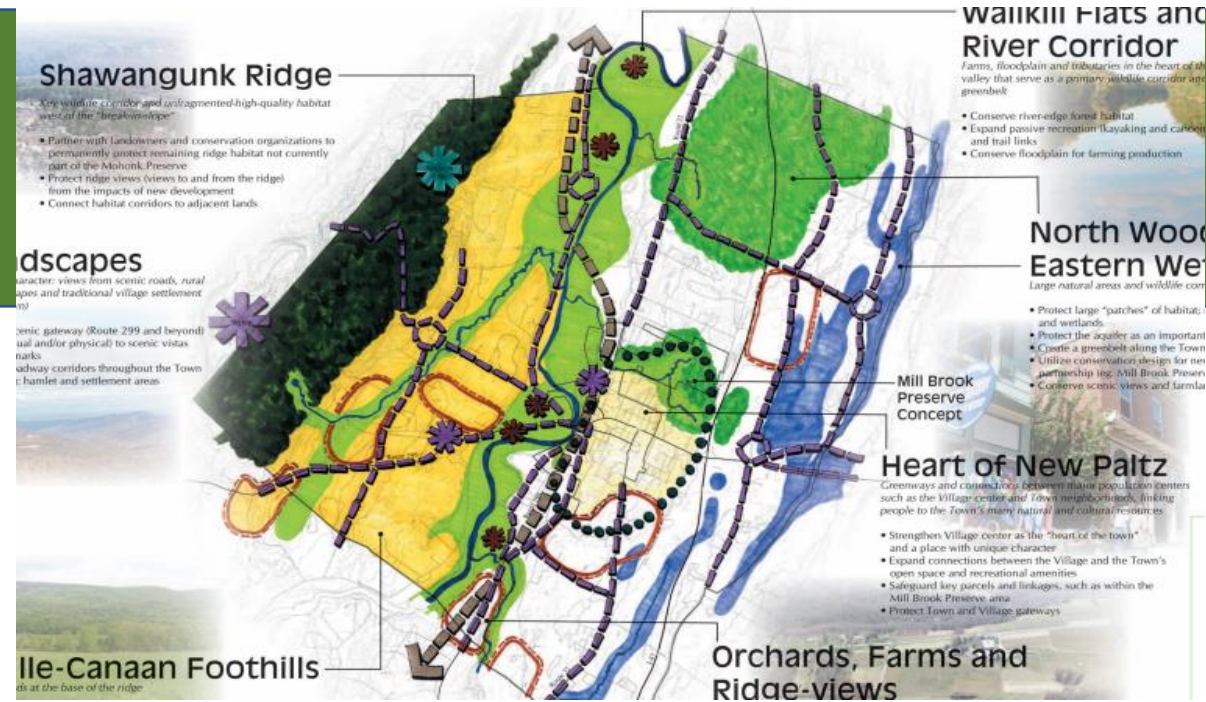
Must Meet State's Hudson Valley Community Preservation Act Requirements

- Describes Purposes of Community Preservation Program
- Maps and Defines 7 Focus Areas
- For Each Focus Area, Identifies Parcels by Identification Numbers, Acreage, & Priority
- Identify & Evaluate Other Town Land Use Tools



Prior Plans and Studies

- Comprehensive Plan (1995)
- Open Space Inventory (2003)
- Open Space Plan (2006)
- Farmland Preservation Plan (2010)
- Reconnaissance-Level Historic Resources Survey (2004)
- Historic Inventory of Open Space Areas (2007)
- (and others)



New Data Collection

- Scenic Views and Roads (update of 2003 inventory)
- Candidate Local Historic Districts (based on 2007 Historic Inventory)



Photo: John Gotto



Photo: Ingrid Haeckel



Information for Focus Areas



- Water Resources (8)
- Agricultural Lands (5)
- Habitat & Natural Areas (10)
- Historic Resources (5)
- Recreation Lands and Trails (4)
- Scenic Resources (2)
- Open Space Areas (1)



Water Resources

1. Mountain Rest Reservoirs Watershed
2. Aquifers
3. Streams and Waterbodies
4. Flood Hazard Areas
5. Riparian Areas
6. DEC Wetlands
7. National Wetlands Inventory
8. Hydric Soils

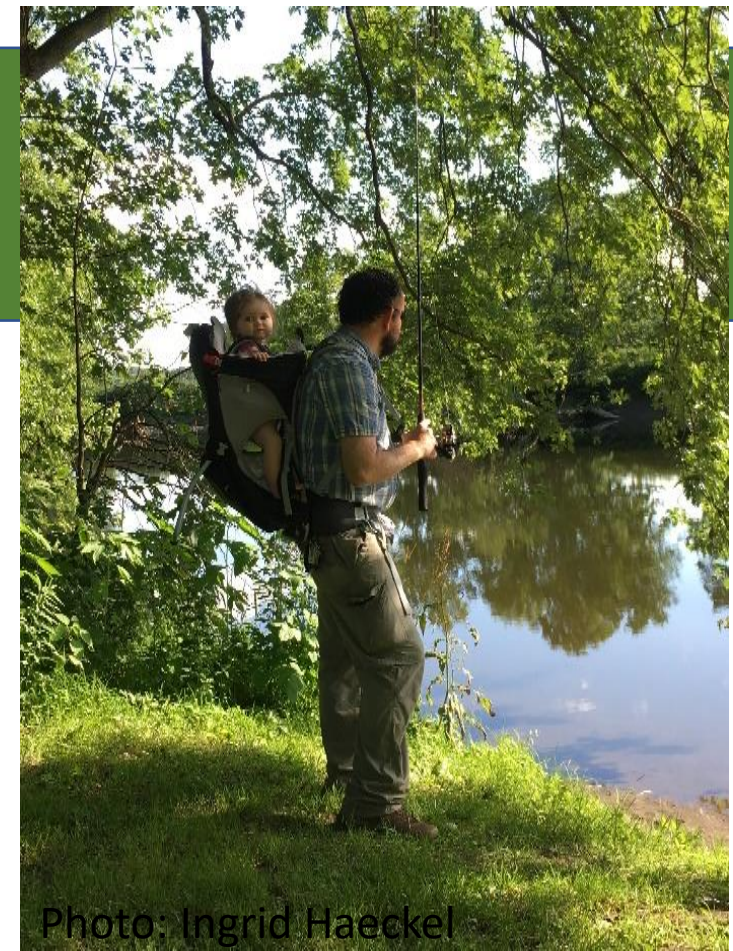


Photo: Ingrid Haeckel



Agricultural Lands

1. NYS Agricultural Districts
2. Agricultural tax exemptions
3. Prime Farmland Soils
4. Farmland Soils of Statewide Importance
5. Farmland “Clusters” (Open Space Plan)



Photo: Cara Lee



Habitat and Natural Areas

1. DEC Significant Biodiversity Areas
2. Audubon Important Bird Area
3. Important Area for rare animals
4. Significant natural communities
5. Northern Wallkill Biodiversity Plan priority areas
6. Meadows, shrublands, or fields >25 acres
7. Forests >100 acres



Photo: Kim Cuppett

8. Matrix forests or linkage zones
9. Climate resilient lands
10. Parcels adjoining protected lands



Historic Resources

1. National/State Register of Historic Places
2. National Historic Districts
3. Designated Local Landmarks
4. Candidate Local Landmarks
5. Candidate Local Historic Districts



Recreation Lands and Trails

1. Lands adjacent to existing parks and public recreation lands
2. Lands adjacent to the River to Ridge Trail, Wallkill Valley Rail Trail, or Empire State Trail
3. Lands adjacent to the Wallkill River
4. Lands providing potential for extension of major trails or the Mill Brook Preserve



Photo: Ingrid Haeckel

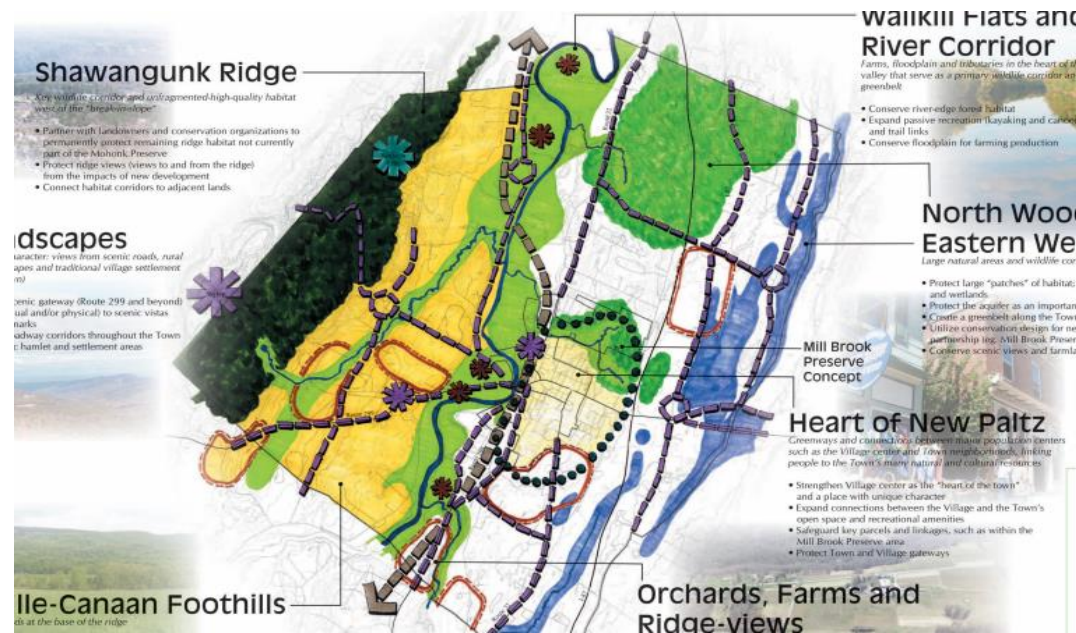


Scenic Resources and Open Space Character Areas



Photo: Cara Lee

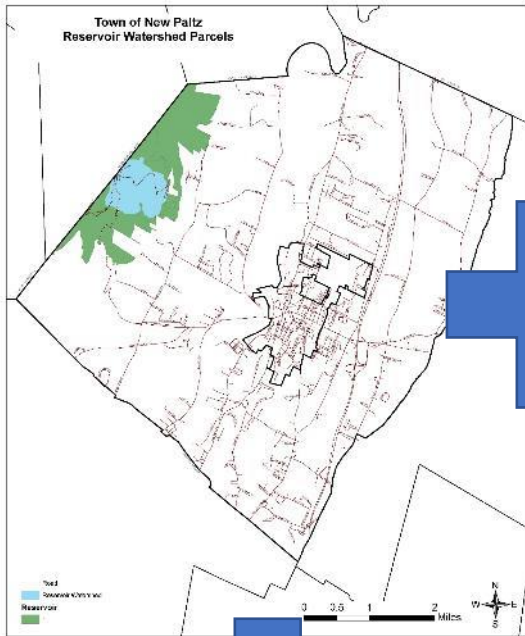
1. Scenic Byway
2. Inventory of local scenic roads and views
3. 2006 Open Space Plan Character Areas



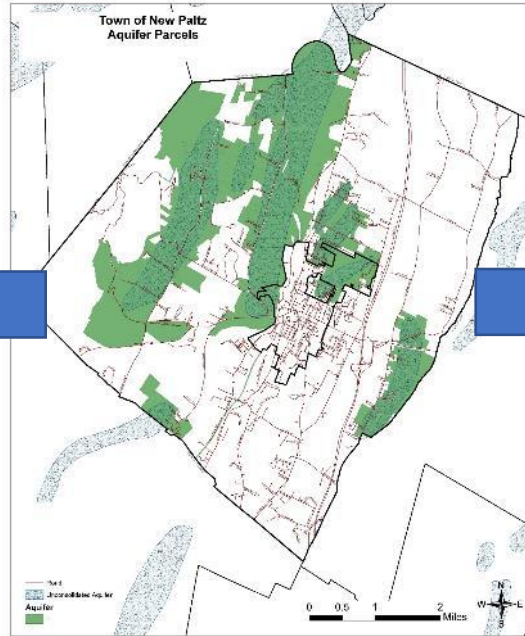
Example: Water Resource Priorities



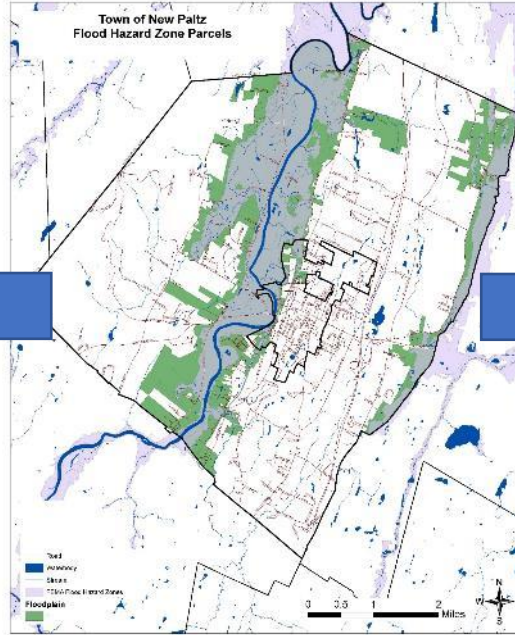
Reservoirs



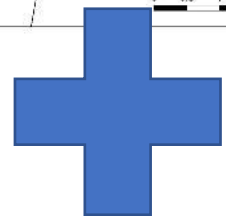
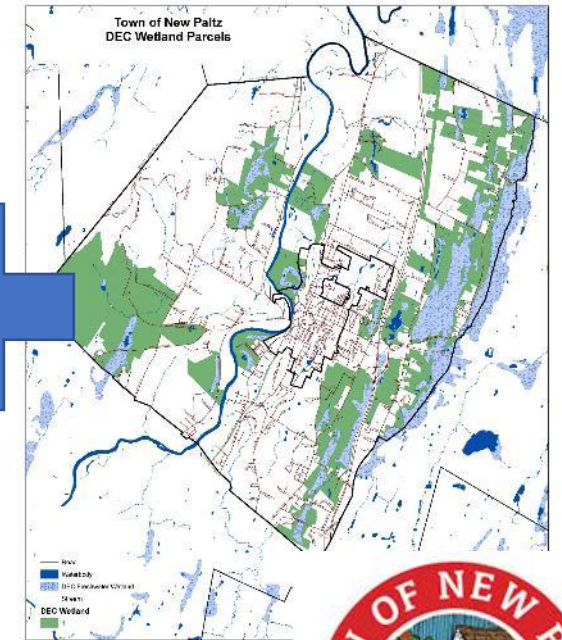
Aquifers



Floodplains



Wetlands



(4 more criteria)



Water Score



Overlapping Values



Water

Agriculture

Habitat

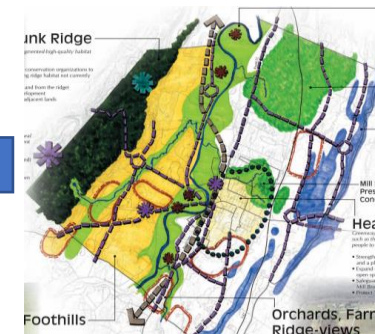
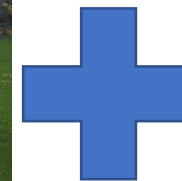
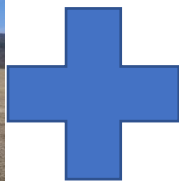
Historic



Recreation

Scenic

Open Space

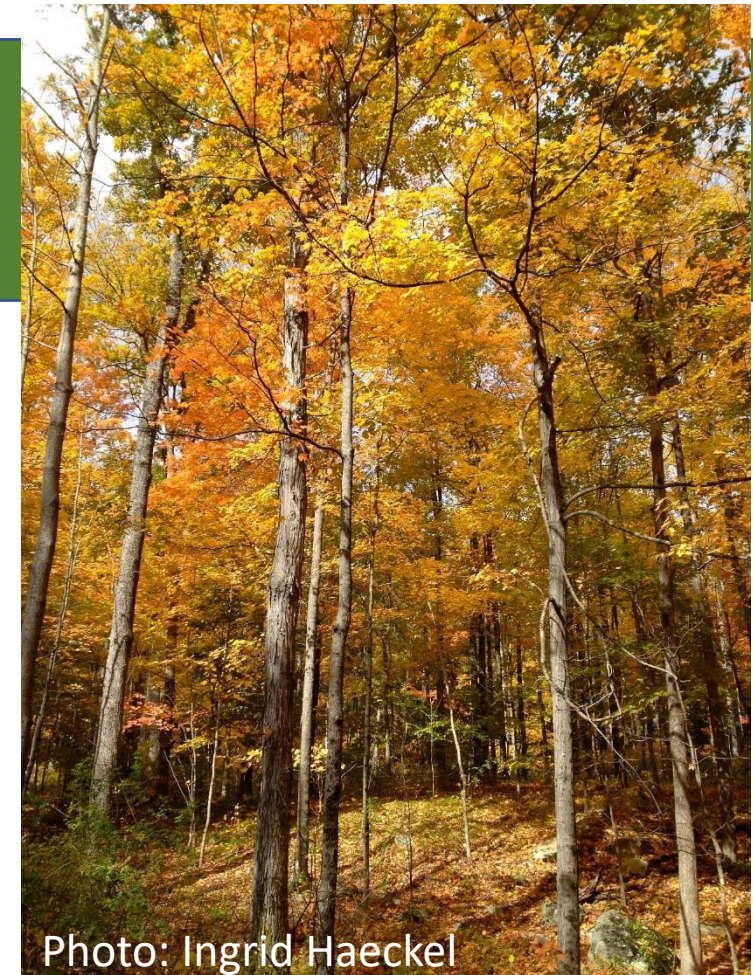


**Total
Score**

Summary

1572 parcels were identified containing priority resources, with scores ranging from 1 to 23 attributes.

The plan is a decision-support tool to prioritize eligible parcels for conservation under a community preservation program.



Community Preservation Plan Next Steps

- Comments on draft plan by Thursday, June 25
- Public Notice – July 2
- Public Hearing on Plan + SEQR Review – July 16
- Adopt Community Preservation Plan by Local Law – August



An aerial photograph of a lush, forested valley. In the center, a winding pond reflects the sky. The surrounding area is densely packed with trees in various shades of green and brown. In the foreground, several houses are visible, partially obscured by the trees. The background shows rolling hills under a soft, hazy sky.

Thank you.

For More Information, Contact:
ENCB@townofnewpaltz.com

Photo: Bob Fagan